

Įvairių modifikacijų, su šoninėmis skylutėmis ar be jų;

Koronariniai kateteriai nukreipėjai

Prekės kodo paaiškinimas.
SH - su skylutėmis
Y - 118 cm ilgis,
A - 110 cm ilgis
jei kodo gale nėra raidžių standartinis ilgis 100 cm
B - 95 cm ilgis,
D - 90 cm ilgis
E - 85 cm,
F - 80 cm,
H - 70 cm,
K - 55 cm ir t.t.

Letter at the end of the CFN	Length (cm)
SH	Sideholes
Y	118
A	110
	100
B	95
D	90
E	85
F	80
H	70
J	60
K	55
L	50
W	47
V	45

Guide Catheter coding examples		
Z26JR50	Z2	Zuma2 family
	5	French size
	JR	Judkins Right curve
	50	size 5.0
	" " =standard length - 100cm"	
SB6AL10A	SB	Sherpa Balanced family
	6	French size
	AL	Amplatz Left-curve
	10	size 1.0
	A	110cm
LA7EBU35SHD	LA	Launcher family
	7	French size
	EBU	Extra Back Up-curve
	35	size 3.5
	SH	contains Sideholes
	D	90cm length

LA - Launcher šeima
7 - Frenčai
EBU - Extra Back Up kreivė
35 - Dydis 3,5
SH - su skylutėmis
D - 90 cm ilgis

Medtronic Brand Product Codes			
	Launcher	Sherpa NX Balanced	Zuma2
5F	LA5		Didelio vidinio diametro: 5 F - 0,058, 6 F - 0,071, 7 F - 0,081, 8 F - 0,090.
6F	LA6	SB6	
7F	LA7	SB7	
8F	LA8		

Medtronic Brand Inner Diameter Measurements			
	Launcher	Sherpa NX Balanced	Zuma2
5F	0.058"		0.058"
6F	0.071"	0.070"	0.070"
7F	0.081"	0.080"	0.081"
8F	0.090"		0.091"

EXTRA LENGTH — WHEN YOU NEED IT

Launcher™ Guide Catheter

The No.1 choice worldwide.¹

We know there are times when
you need a little more reach.

With the 118 cm Launcher™
guide catheter you have the reach
and device working length you
need — expanding your possibilities.

YOU
ASKED
WE
LISTENED
118 CM

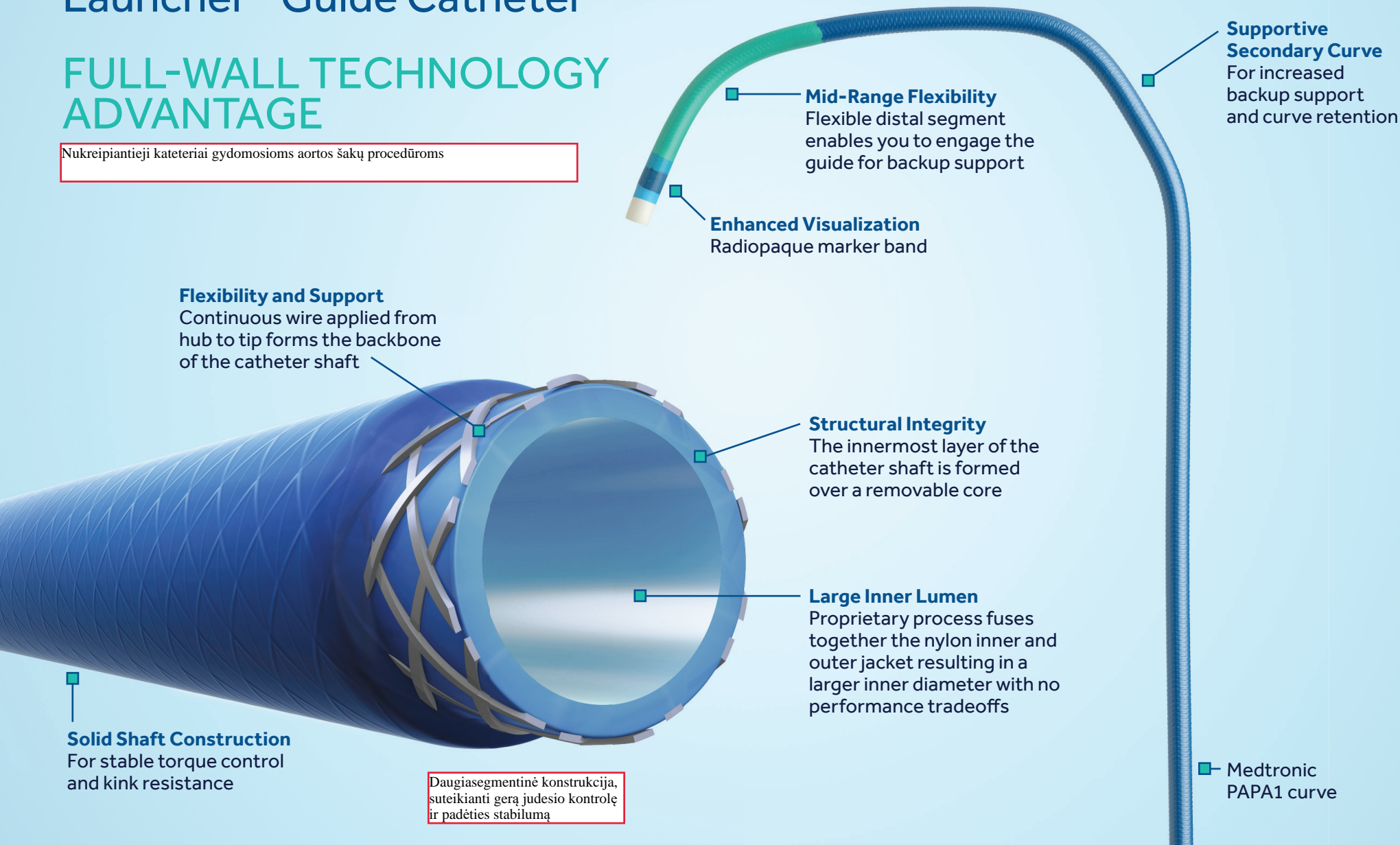


Medtronic
Further. Together

Launcher™ Guide Catheter

FULL-WALL TECHNOLOGY ADVANTAGE

Nukreipiantieji kateteriai gydymosioms aortos šakų procedūroms



Daugiasegmentinė konstrukcija, suteikianti gerą judesio kontrolę ir padėties stabilumą

OPTIMIZED WORKING LENGTH

Compared with a 125 cm guide catheter, the 118 cm Launcher™ guide catheter increases your device working length.

118 CM GIVES YOU THE EXTRA REACH YOU NEED

5x OVER INCREASE

in device working length for Resolute Onyx™ DES^{2,3}

8x OVER INCREASE

in device working length for Euphora™ Balloon^{2,3}

EXPANDING TREATMENT OPTIONS

Launcher™ guide catheter's innovative length, **118 cm**, offers a significant increase in reach, while optimizing device working length.



Image not drawn to scale

118 CM LAUNCHER™ GUIDE CATHETER

ORDERING INFORMATION

French Size	CFN	French Size	CFN	French Size	CFN	French Size	CFN	French Size	CFN	French Size	CFN
5F	LA5AL10Y	5F	LA5IMAY	5F	LA5JR40Y	6F	LA6AL10Y	6F	LA6IMAY	6F	LA6JR40Y
	(240)LA5AL10Y		(240)LA5IMAY		(240)LA5JR40Y		(240)LA6AL10Y		(240)LA6IMAY		(240)LA6JR40Y
French Size	CFN	French Size	CFN	French Size	CFN	French Size	CFN	French Size	CFN	French Size	CFN
5F	LA5EBU35Y	5F	LA5JL35Y	5F	LA5MB1Y	6F	LA6EBU35Y	6F	LA6JL35Y	6F	LA6MB1Y
	(240)LA5EBU35Y		(240)LA5JL35Y		(240)LA5MB1Y		(240)LA6EBU35Y		(240)LA6JL35Y		(240)LA6MB1Y
French Size	CFN	French Size	CFN	French Size	CFN	French Size	CFN	French Size	CFN	French Size	CFN
5F	LA5EBU375Y	5F	LA5JL40Y	5F	LA5MRADIALY	6F	LA6EBU375Y	6F	LA6JL40Y	6F	LA6MRADIALY
	(240)LA5EBU375Y		(240)LA5JL40Y		(240)LA5MRADIALY		(240)LA6EBU375Y		(240)LA6JL40Y		(240)LA6MRADIALY
French Size	CFN	French Size	CFN	French Size	CFN	French Size	CFN	French Size	CFN	French Size	CFN
5F	LA5EBU40Y	5F	LA5JL45Y	5F	LA5PAPA1Y	6F	LA6EBU40Y	6F	LA6JL45Y	6F	LA6PAPA1Y
	(240)LA5EBU40Y		(240)LA5JL45Y		(240)LA5PAPA1Y		(240)LA6EBU40Y		(240)LA6JL45Y		(240)LA6PAPA1Y

References

¹ Based on data on file at Medtronic.

² Based on bench test data on file at Medtronic. Bench test data may not be indicative of clinical performance.

³ Based on 2.50 x 30 mm Resolute Onyx™ DES and 2.50 x 30 mm Euphora™ semicompliant balloon dilatation catheter.

Medtronic

For further information, please call and/or consult Medtronic at the toll-free numbers or websites listed.

Medtronic
3576 Unocal Place
Santa Rosa, CA 95403
USA
Tel: 707.525.0111

Europe
Medtronic Intl. Trading SARL
Route du Molliou 31
Case Postale
CH-1131 Tolochenaz
Switzerland
Tel: 41.21.802.7000
Fax: 41.21.802.7900

LifeLine Customer Support
Tel: 877.526.7890
Tel: 763.526.7890

Product Services
Tel: 888.283.7868
Fax: 800.838.3103

Indications for Use: The Medtronic Guiding Catheter is designed to provide a pathway through which therapeutic devices are introduced. The guiding catheter is intended to be used in the coronary or peripheral vascular system.

Important Information: Refer to *Instructions for Use* supplied with the device for indications, warnings, precautions, and adverse effects.

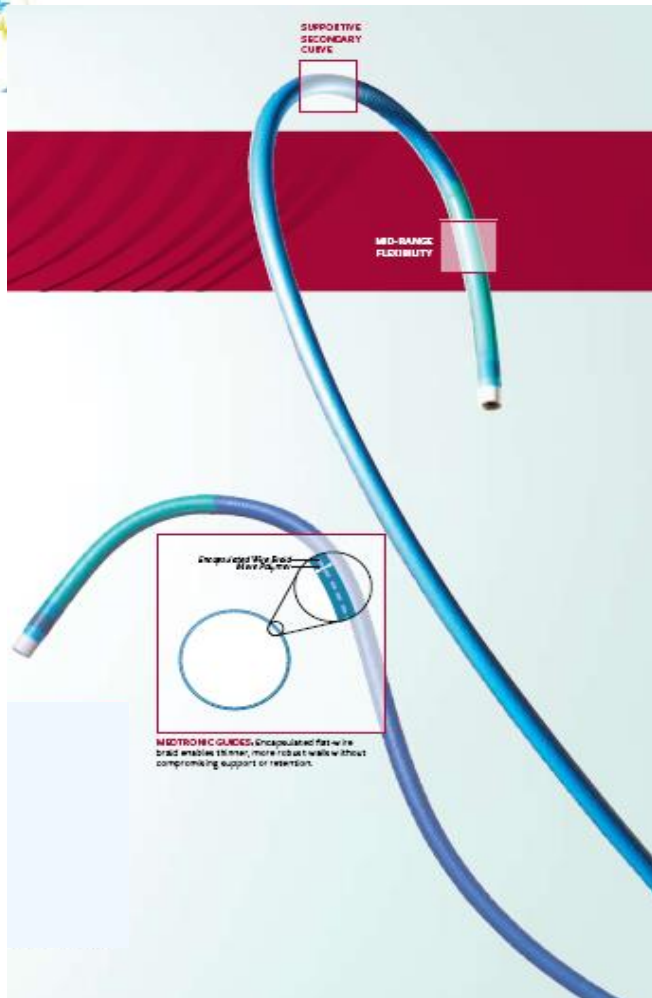
CAUTION: Federal (USA) law restricts this device to sale by or on the order of a physician.

The curve and size recommendations in this guide are not meant to replace patient-specific clinical judgement.

medtronic.com

©2019 Medtronic. All rights reserved. Medtronic, Medtronic logo, and Further, Together are trademarks of Medtronic. All other brands are trademarks of a Medtronic company. For distribution in the USA and EU only.
UC201912673 IE 05/19

Launcher Overview



Large Lumen Guide Balancing Flexibility and Support

- Workhorse construction suitable for various anatomies and takeoffs
- Flexible distal segment enables you to engage for backup support
- Supportive secondary curve for backup support and curve retention

Enhanced Visualization

- Larger lumens to maximize contrast flow for enhanced visualization
- Radiopaque marker band and nylon shaft

Full-Wall Technology Construction

- Robust, thinner walls without compromising support or curve retention

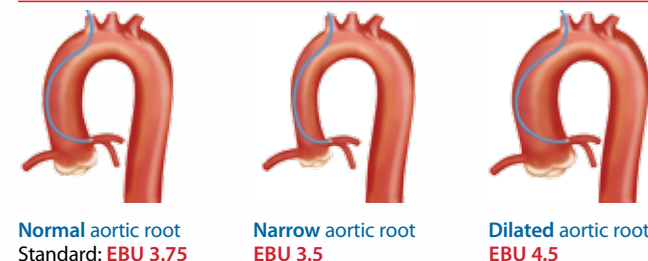
Full-range of coronary and peripheral curves

- 5F – 8F sizes available
- Custom lengths and custom program available

Curve Shapes for a Variety of Anatomies

Radial Curves

Radial Curve Selection LM Normal Takeoff

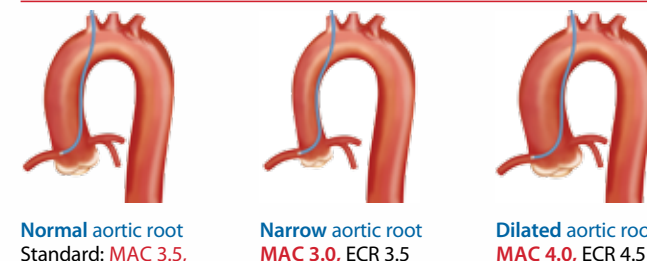


Normal aortic root
Standard: **EBU 3.75**

Narrow aortic root
Standard: **EBU 3.5**

Dilated aortic root
Standard: **EBU 4.5**

Radial Curve Selection RCA Normal Takeoff



Normal aortic root
Standard: **MAC 3.5**,
ECR 4.0
Specialty: MRADIAL

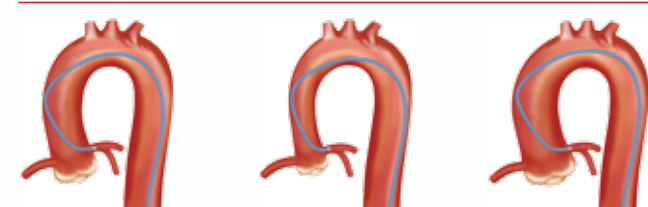
Narrow aortic root
Standard: **MAC 3.0**, ECR 3.5

Dilated aortic root
Standard: **MAC 4.0**, ECR 4.5

NOTE: Curves in red text indicate type of curve used in illustration.

Left Curves

Normal Left Takeoffs

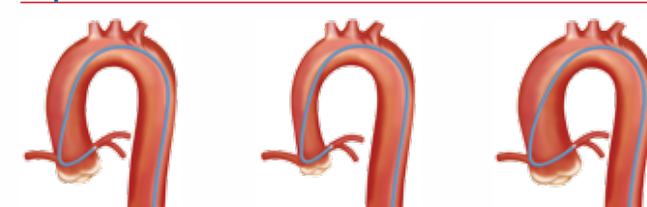


Normal aortic root
Standard: **JL 4.0**
Specialty: EBU 3.75,
EBU 4.0, JCL 4.0

Narrow aortic root
Standard: **JL 3.5**
Specialty: EBU 3.5,
JCL 3.5

Dilated aortic root
Standard: **JL 4.5**
Specialty: EBU 4.5,
JCL 4.5

Superior Left Takeoffs

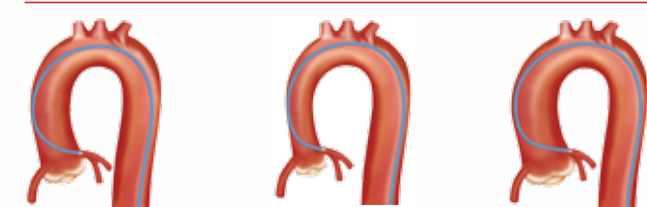


Normal aortic root
Standard: **JL 4.0**
Specialty: EBU 3.5,
Champ 3.0

Narrow aortic root
Standard: **JL 3.5**
Specialty: EBU 3.0,
Champ 2.5

Dilated aortic root
Standard: **JL 4.5**
Specialty: EBU 4.5,
Champ 3.5

Inferior Left Takeoffs

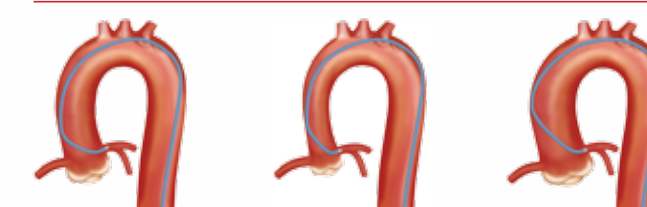


Normal aortic root
Standard: **JL 4.0**
Specialty: **EBU 3.75**,
EBU 4.0

Narrow aortic root
Standard: **JL 3.5**
Specialty: **EBU 3.5**

Dilated aortic root
Standard: **JL 4.5**
Specialty: **EBU 4.5**

Normal Takeoffs and Short Left Mains



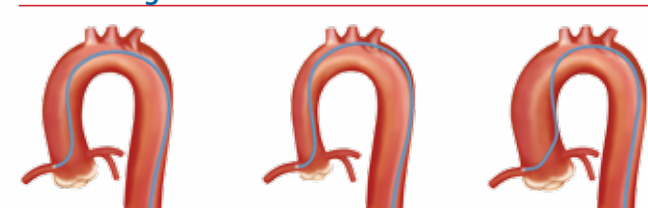
Normal aortic root
Standard: **SL 4.0**, SAL 2.0

Narrow aortic root
Standard: **SL 3.5**, SAL 1.0

Dilated aortic root
Standard: **SL 4.5**, SAL 2.5

Right Curves

Normal Right Takeoffs

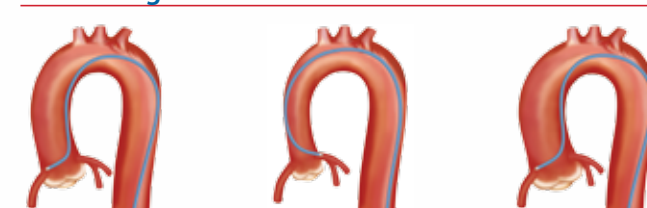


Normal aortic root
Standard: **JR 4.0**, RMHS II
Specialty: Champ™ 1.5,
RBU 4.0, JCR 4.0

Narrow aortic root
Standard: **JR 3.5**
Specialty: Champ 1.5,
RBU 3.5, JCR 3.5

Dilated aortic root
Standard: **JR 4.5**
Specialty: Champ 2.0,
JCR 4.5

Inferior Right Takeoffs

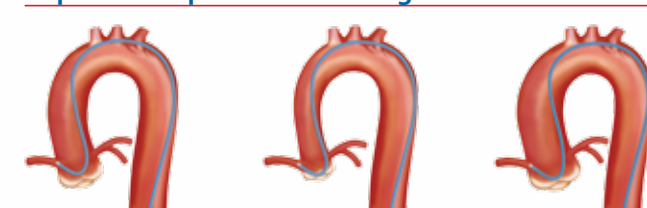


Normal aortic root
Standard: **JR 4.0**
Specialty: **ECR 4.0**,
RBU 4.0

Narrow aortic root
Standard: **JR 3.5**,
SAR 1.0
Specialty: **ECR 3.5**,
RBU 3.5

Dilated aortic root
Standard: **JR 4.5**,
AL 3.0, SAL 2.0
Specialty: **ECR 4.5**

Superior Shepherd's Crook Right Takeoffs

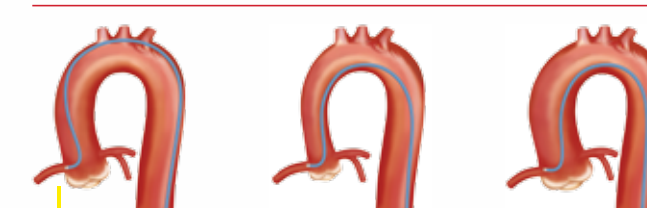


Normal aortic root
Standard: **SCR 3.5**,
HS II
Specialty: **MAC 3.5**
Champ 1.5

Narrow aortic root
Standard: **SCR 4.0**,
HS I
Specialty: **MAC 3.0**
Champ 1.0

Dilated aortic root
Standard: **SCR 5.0**,
HS III
Specialty: Champ 1.5

Normal Takeoffs and Proximal Lesions in the RCA

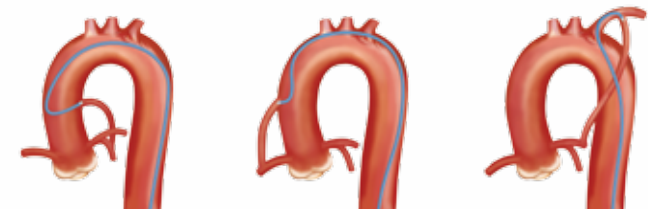


Normal aortic root
Standard: **SAL 2.0**,
RMHS II
Specialty: **NOTO**

Narrow aortic root
Standard: **SAL 1.0**
Specialty: **NOTO**

Dilated aortic root
Standard: **SAL 2.5**,
Specialty: **NOTO**

Bypass Grafts



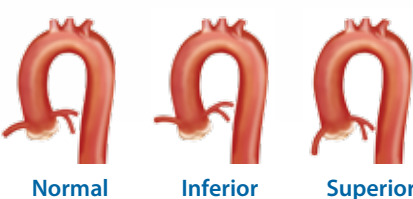
SVG to LCX
Standard: **LCB**, MB 1
Specialty: **Champ 2.0**

SVG to RCA
Standard: **RCB**, HS II
Specialty: Champ 1.5

IMA to LAD
Standard: **IMA 90 cm**
Specialty: Champ 0.5

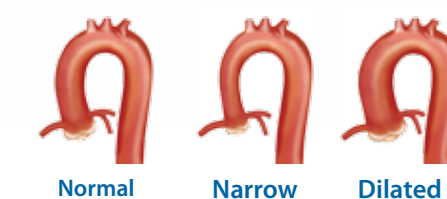
Common Anatomies

Three types of ostial takeoffs
Can occur in right or left arteries



Normal **Inferior** **Superior**

Three types of aortic roots



Normal aortic root
3.5–4.0 cm

Narrow aortic root
<3.5 cm

Dilated aortic root
>4.0 cm

Modifikācijas: EBU, HS, NOTO, RCB

Curve Abbreviation Key

EBU = Extra Backup
HS = Hockey Stick
LCB = Left Coronary Bypass
MAC = Multi-aortic Curve
NOTO = No Torque Right
RBU = Right Backup
RCB = Right Coronary Bypass
RMHS = Relaxed Modified Hockey Stick
SAL = Short Amplatz Left
SL = Short Left

www.medtronic.com

Medtronic, Inc.
3576 Unocal Place
Santa Rosa, CA 95403
USA
Tel: 707.525.0111

LifeLine Customer Support
Tel: 877.526.7890
Tel: 763.526.7890

Product Services
Tel: 888.283.7868
Fax: 800.838.3103

Europe
Medtronic Intl. Trading SARL
Route du Molliat 31
Case Postale
CH-1131 Tolochenaz
Switzerland
Tel: 41.21.802.7000
Fax: 41.21.802.7900

Canada
Medtronic of Canada Ltd.
99 Hereford Street
Brampton, Ontario L6Y 0R3
Canada
Tel: 905.460.3800
Fax: 905.460.3998
Toll-free: 800.268.5346

Asia Pacific
Medtronic Intl. Ltd.
49 Changi South Avenue 2
Nasaco Tech Centre
Singapore 486056
Singapore
Tel: 65.6436.5000
Fax: 65.6776.6335

Latin America
Medtronic USA, Inc.
Doral Corporate Center II
3750 NW 87th Avenue, Suite 700
Miami, FL 33178
USA
Tel: 305.500.9328
Fax: 786.709.4244

Medtronic Japan Co., Ltd.
Headquarters
Comodio Shiodome 5F
2-14-1 Higashi-Shimbashi
Minato-ku, Tokyo, 105-0021
Japan
Tel: 81.3.6430.2011

Vascular Business
Comodio Shiodome 5F
2-14-1 Higashi-Shimbashi
Minato-ku, Tokyo, 105-0021
Japan
Tel: 81.3.6430.2014

Guide Catheter Family

ACTIVE AND BALANCED GUIDE CATHETERS

SHERPA NX ACTIVE Active Guide Catheters

- Soft distal segment for active engagement with soft tip and exceptional lumen lubricity
- Distal segment allows for manipulation of the catheter to obtain stable position
- Distal segment can reshape in anatomy
- Large 6F ID (0.070") for maximum contrast flow and absolute visualization

LAUNCHER Balanced Guide Catheters

- Balanced guide for stable and consistent performance
- Workhorse performance suitable for a variety of anatomies and takeoffs
- Flexible distal segment for manipulation if case requires
- Largest Medtronic 6F ID (0.071") for maximum contrast flow and absolute visualization

Modifikacijos / kreivės

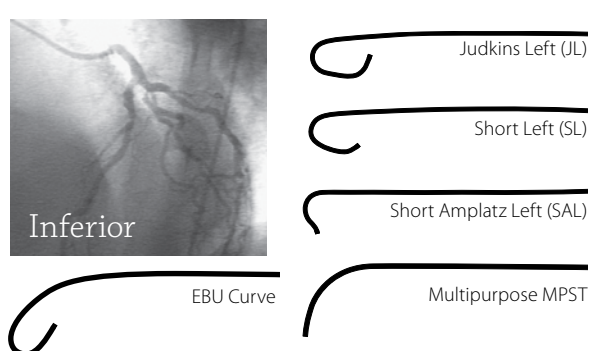
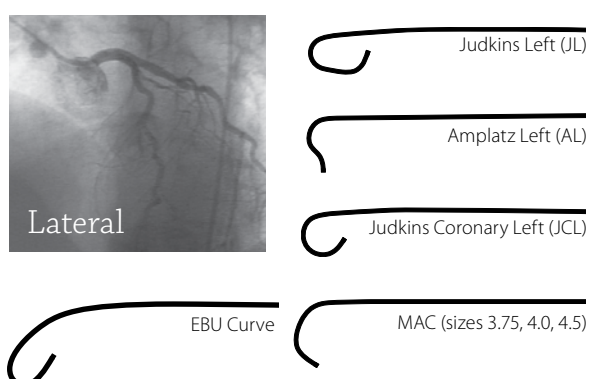
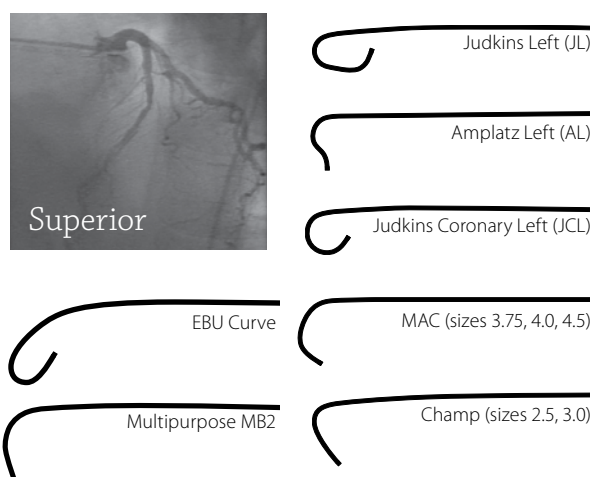
SHERPA NX BALANCED Balanced Guide Catheters

- Balanced guide for stable consistent performance with soft tip and exceptional lumen lubricity
- Workhorse performance suitable for a variety of anatomies and takeoffs
- Flexible distal segment for manipulation if case requires
- Supportive secondary curve for increased backup support and curve retention
- Large 6F ID (0.070") and 7F ID (0.080") for maximum contrast flow and absolute visualization

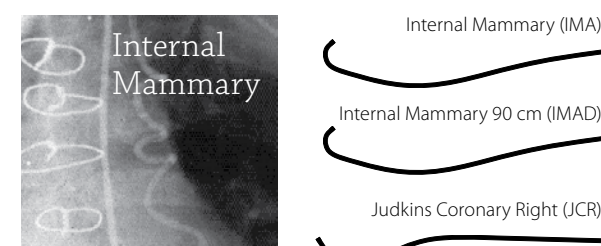
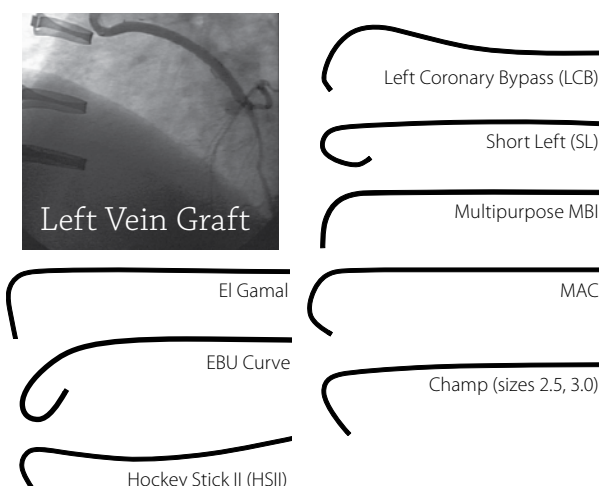
FULL-WALL TECHNOLOGY Guide Construction

- Encapsulated flat wire braid enables thinner, robust walls without compromising support or retention
- Designed for large lumens and enhanced flexibility without loss of support

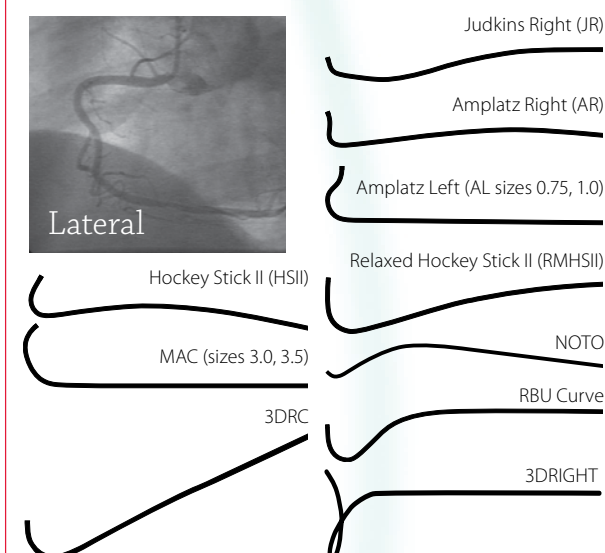
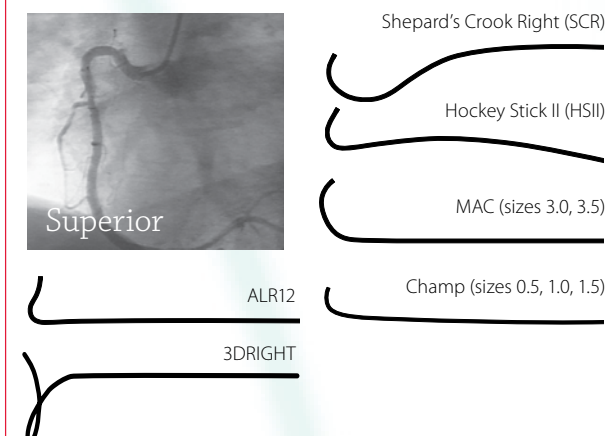
LEFT CORONARY ARTERY



GRAFT



RIGHT CORONARY ARTERY



RADIAL



www.medtronic.eu

Medtronic International Trading Sàrl
Route du Molliat 31
Case postale
CH-1131 Tolochenaz
Tel: +41 (0) 21 802 70 00
Fax: +41 (0) 21 802 79 00

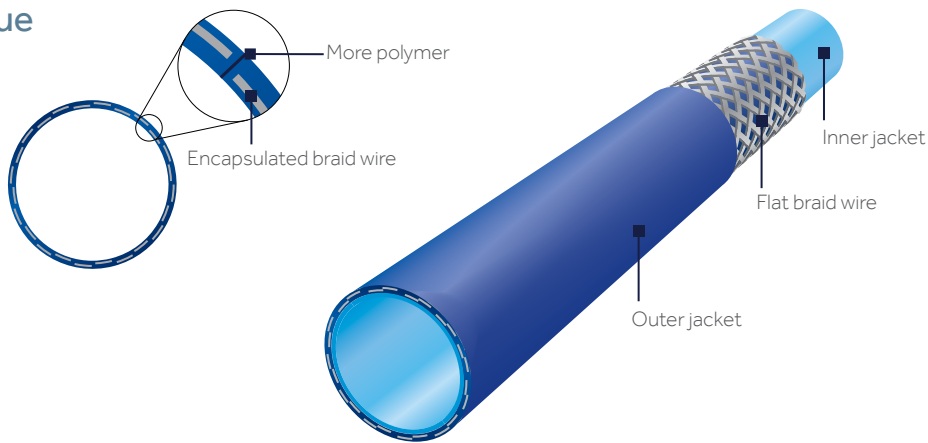
Worldwide Leaders in Guide Catheters¹

OUR GUIDE CATHETER FAMILY OFFERS
OPTIONS FOR GUIDE ENGAGEMENT
WITHOUT COMPROMISING PERFORMANCE

All Launcher™ and Sherpa NX™
guide catheters incorporate unique
Full Wall Technology

The distinctive shaft construction
optimises the balance between a
large lumen and robust performance,
and offers excellent kink resistance
and curve retention.

Our encapsulated flat wire braid
enables thinner, robust walls without
compromising support or retention.



A broad range of sizes and shapes are available to
fit your needs

■ Our Launcher™ and Sherpa NX™ guide catheters are available
in 5–8 F sizes

■ Over 230 specialty curves available

Galima įsigyti daugiau kaip 230
specifinių kreivių

¹Based on 2017 data.

Medtronic

Medtronic
3576 Unocal Place
Santa Rosa, CA 95403
USA
Tel: 707.525.0111

LifeLine Customer Support
Tel: 877.526.7890
Tel: 763.526.7890

Product Services
Tel: 888.283.7868
Fax: 800.838.3103

Europe
Medtronic Intl. Trading SARL
Route du Molliat 31
Case Postale
CH-1131 Tolochenaz
Switzerland
Tel: 41.21.802.7000
Fax: 41.21.802.7900

Canada
Medtronic of Canada Ltd.
99 Hereford Street
Brampton, Ontario L6Y 0R3
Canada
Tel: 905.460.3800
Fax: 905.460.3998
Toll-free: 800.268.5346

Asia Pacific
Medtronic Intl. Ltd.
49 Changi South Avenue 2
Nasaco Tech Centre
Singapore 486056
Singapore
Tel: 65.6436.5000
Fax: 65.6776.6335

Latin America
Medtronic
9850 Doral Blvd., 4th Floor
Miami, FL 33178
USA
Tel: 786.709.4200
Fax: 786.709.4244

© 2017 Medtronic. All rights reserved. Medtronic, Medtronic logo and Further, Together are trademarks of Medtronic. All other brands are trademarks of a Medtronic company. For distribution only in markets where Launcher™ and Sherpa NX™ guide catheters have been approved. Not for distribution in Japan or France. UC201711760IE 4/17

medtronic.com

FLEXIBILITY,
CONTROL, AND
SUPPORT FOR
CHALLENGING
PROCEDURES

Sherpa NX™
Guide Catheters

Launcher™
Guide Catheters

Medtronic
Further, Together

ACTIVE
FLEXIBILITY

SUPPORTIVE
SECONDARY
CURVE

galiukas labai minkštas ir
rentgenokontrastinis;
daugiasegmentinė
konstrukcija.

Kateteris didelio vidinio
diametro, sąlygojančio
aukštą skysčio srovės
pralaidumą 5 F kateteris -
0.058 colių

Encapsulated Wire Braid

MEDTRONIC FULL-WALL TECHNOLOGY:
Encapsulated flat-wire braid enables thinner,
more robust walls without compromising support,
retention, or torque response.

BALANCED PERFORMANCE THAT'S AHEAD OF THE CURVE

The Launcher™ guide catheter offers you a blend of flexibility, support and visualisation — the capability you need to respond to your challenging cases.

Advanced Platform Designed for Multiple Interventional Approaches

- Designed for radial and femoral approaches
- Soft distal segment enables you to actively engage the guide for backup support
- Full-Wall Technology construction provides kink resistance and stable torque control

Enhanced Visualisation

- Large 5 F I.D. (0.058 inches) allows for increased contrast flow for enhanced visualisation
- Vest-Tech Nylon outer jacket provides excellent hub to tip radiopacity

Full Range of Traditional and Specialty Curves

- Extensive collection of specialty transradial and brachial curves

LAUNCHER™ 5 F GUIDE CATHETERS

LEFT CORONARY CURVES					Backup Support Left
Left Standard	Short Left	JCL	Amplatz Left	Short Amplatz Left	EBU
LA5JL20	LA5SL30	LA5JCL15	LA5AL75	LA5SAL75	LA5EBU20
LA5JL30	LA5SL35	LA5JCL30	LA5AL10	LA5SAL10	LA5EBU30
LA5JL35	LA5SL40	LA5JCL35	LA5AL15	LA5SAL15	LA5EBU35
LA5JL40	LA5SL45	LA5JCL40	LA5AL20	LA5SAL20	LA5EBU375
LA5JL45	LA5SL50	LA5JCL45	LA5AL25	LA5SAL25	LA5EBU40
LA5JL50	LA5SL50	LA5JCL50	LA5AL30	LA5SAL30	LA5EBU45
LA5JL60	LA5SL60		LA5AL40	LA5SAL40	LA5EBU50
RIGHT CORONARY CURVES					
Right Standard	Short Right	JCR	Amplatz Right	Shepherd's Crook Right	Backup Support Right
LA5JR30	LA5SR30	LA5JCR35	LA5AR10	LA5SCR35	LA5RBU35
LA5JR35	LA5SR35	LA5JCR40	LA5AR20	LA5SCR40	LA5RBU40
LA5JR40	LA5SR40	LA5JCR45	LA5ALR12	LA5SCR50	
LA5JR45	LA5SR50	LA5JCR50			ECR
LA5JR50	LA5SR60		Short Amplatz Right		LA5ECR35
LA5JR60			LA5SAR10		LA5ECR40
			LA5SAR20		LA5ECR45
					3-Dimensional
					LA53DRIGHT
OTHER CURVES					
Multipurpose	MAC (Multi-Aortic)	Bypass	Champ	Radial Specialty	NOTO
LA5MB1	LA5MAC30	LA5IMA	LA5CHAMP05	LA5LARA	LA5NOTO
LA5MB2	LA5MAC35	LA5LCB	LA5CHAMP10	LA5MRADIAL	
LA5MPST	LA5MAC375	LA5RCB	LA5CHAMP15	LA5MRESS	
LA5HSI	LA5MAC40	LA5RCBII	LA5CHAMP20	LA5RRAD	
LA5HSII	LA5MAC45		LA5CHAMP25		EL GAMAL
LA5HSIII	LA5MAC50		LA5CHAMP30		LA5ELGAMAL
LA5HSREL			LA5CHAMP35		
			LA5CHAMP40		


Shaft Diameter: 5 F Inner Diameter: 0.058 in. 5 packs available in select curves

didelio vidinio diametro: 5F kateterių -0,058". D raidė užsakyme reiškia - 90 cm ilgis, jei D raidės nenurodom, tuomet bus 100 cm. ilgis

Indications for Use: The Medtronic Guiding Catheter is designed to provide a pathway through which therapeutic devices are introduced. The guiding catheter is intended to be used in the coronary or peripheral vascular system.
Important Information: Refer to *Instructions for Use* supplied with the device for indications, warnings, precautions, and adverse effects.
CAUTION: Federal (USA) law restricts this device to sale by or on the order of a physician.
The curve recommendations in this guide are not meant to replace patient-specific clinical judgement.

Medtronic

Medtronic
3576 Unocal Place
Santa Rosa, CA 95403
USA
Tel: 707.525.0111

LifeLine Customer Support
Tel: 877.526.7890
Tel: 763.526.7890

Product Services
Tel: 888.283.7868
Fax: 800.838.3103

Europe
Medtronic Intl. Trading SARL
Route du Molliau 31
Case Postale
CH-1131 Tolochenaz
Switzerland
Tel: 41.21.802.7000
Fax: 41.21.802.7900

Canada
Medtronic of Canada Ltd.
99 Hereford Street
Brampton, Ontario L6Y 0R3
Canada
Tel: 905.460.3800
Fax: 905.460.3998
Toll-free: 800.268.5346

Asia Pacific
Medtronic Intl. Ltd.
49 Changi South Avenue 2
Nasaco Tech Centre
Singapore 486056
Singapore
Tel: 65.6436.5000
Fax: 65.6776.6335

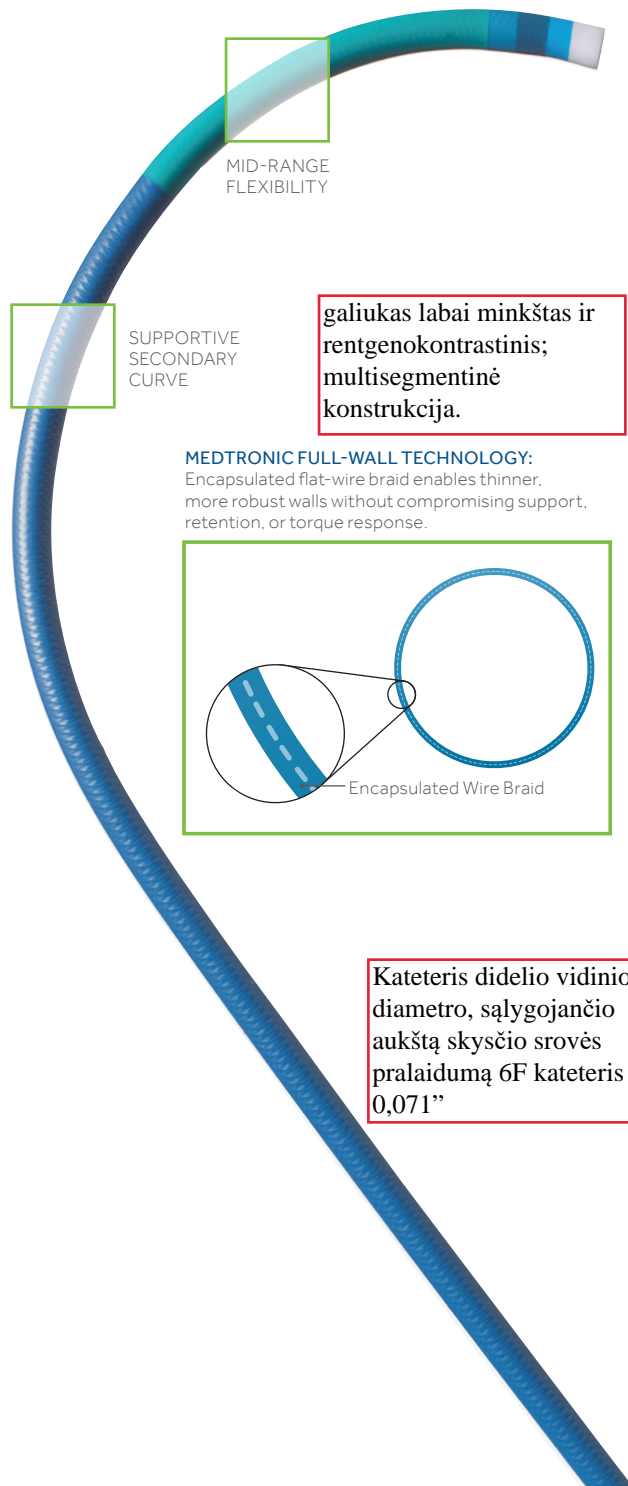
Latin America
Medtronic
9850 Doral Blvd., 4th Floor
Miami, FL 33178
USA
Tel: 786.709.4200
Fax: 786.709.4244

medtronic.com

© 2017 Medtronic. All rights reserved. Medtronic, Medtronic logo and Further, Together are trademarks of Medtronic. All other brands are trademarks of a Medtronic company.
For distribution only in markets where the Launcher™ guide catheter has been approved. Not for distribution in Japan or France. UC201701776IE 8/17

Launcher™ Guide Catheter

Nukreipiantieji kateteriai visceralinėms ir renalinėms procedūroms:
išorinis diametras 6F, 7F arba 8F pasirinktinai;



BALANCED PERFORMANCE THAT'S AHEAD OF THE CURVE

The Launcher™ guide catheter offers you a blend of flexibility, support and visualisation — the capability you need to respond to your challenging cases.

Advanced Platform Designed for Multiple Interventional Approaches

- Designed for radial and femoral approaches
- Flexible distal segment enables you to engage the guide for backup support
- Full-Wall Technology construction provides kink resistance and stable torque control
- Supportive secondary curve for increased backup support and curve retention

Enhanced Visualisation

- Large 6 F.I.D. (0.071 inches) allows for increased contrast flow for enhanced visualisation
- Vest-Tech Nylon outer jacket provides excellent hub to tip radiopacity

Full Range of Traditional and Specialty Curves

- Extensive collection of traditional and specialty coronary curves available

LAUNCHER™ 6 F GUIDE CATHETERS

LEFT CORONARY CURVES					Backup Support Left
Left Standard (JL)	Short Left (SL)	JCL	Amplatz Left	Short Amplatz Left	EBU
LA6JL25	LA6SL30	LA6JCL30	LA6AL75	LA6SAL75	LA6EBU30
LA6JL30	LA6SL35	LA6JCL35	LA6AL10	LA6SAL10	LA6EBU325
LA6JL35	LA6SL40	LA6JCL40	LA6AL15	LA6SAL15	LA6EBU35
LA6JL40	LA6SL45	LA6JCL45	LA6AL175	LA6SAL20	LA6EBU375
LA6JL40P^	LA6SL50	LA6JCL50	LA6AL20	LA6SAL25	LA6EBU40
LA6JL45	LA6SL60		LA6AL25	LA6SAL30	LA6EBU45
LA6JL50			LA6AL30	LA6SAL40	LA6EBU50
LA6JL60			LA6AL40		
			LA6AL50		
Left Standard (FL)	Short Left (FLST)				
LA6FL35	LA6FL35ST				
LA6FL40	LA6FL40ST				
LA6FL40G^^	LA6FL45ST				
LA6FL40P^	LA6FL50ST				
RIGHT CORONARY CURVES					
Right Standard	Short Right	JCR	Amplatz Right	Shepherd's Crook Right	Backup Support Right
LA6JR30	LA6SR30	LA6JCR35	LA6AR10	LA6SCR35	LA6RBU35
LA6JR35	LA6SR35	LA6JCR40	LA6AR20	LA6SCR40	LA6RBU40
LA6JR40	LA6SR40	LA6JCR45	LA6ALR12	LA6SCR50	LA6RBU45
LA6JR40P^	LA6SR45	LA6JCR50			
LA6JR45	LA6SR50		Short Amplatz Right		ECR
LA6JR50	LA6SR60		LA6SAR10		LA6ECR30
LA6JR60			LA6SAR20		LA6ECR35
					LA6ECR40
Right Standard (FR)					LA6ECR45
LA6FR35					
LA6FR40					3-Dimensional
					LA63DRC
					LA63DRIGHT
OTHER CURVES					
Multipurpose	MAC (Multi-Aortic)	Bypass	Champ	Peripheral	Radial Specialty
LA6MB1	LA6MAC30	LA6LCB	LA6CHAMP05	LA6CHAMP15K+	LA6LARA
LA6MB2	LA6MAC35	LA6LCBD*	LA6CHAMP10	LA6CHAMP20K+	LA6MRADIAL
LA6MP1	LA6MAC375	LA6RCB	LA6CHAMP15	LA6CHAMP25K+	LA6MRESS
LA6MP2	LA6MAC40	LA6RCBD*	LA6CHAMP20	LA6IMAK+	LA6RRAD
LA6MPST	LA6MAC45	LA6RCBII	LA6CHAMP25	LA6JR40K+	
LA6HSI	LA6MAC50	LA6IMA	LA6CHAMP30	LA6MP1K+	NOTO
LA6HSII		LA6IMAD*	LA6CHAMP35	LA6MPHK+	LA6NOTO
LA6RMHSII			LA6CHAMP40	LA6PK1W++	
LA6HSIII				LA6RDCK+	EL GAMAL
					LA6ELGAMAL

D* = 90 cm shaft length. Shaft Diameter: 6 F. K+ = 55 cm shaft length. Inner Diameter: 0.071 in. W++ = 47 cm shaft length. P^ = Posterior
 To order curves with sideholes, please add "SH" to end of model number. G^^ = Anterior. 5 packs available in select curves.

Indications for Use: The Launcher™ 6 F guide catheter is indicated for use in the coronary or peripheral vascular system.
 Important Information: The curve recommendations are based on the catheter's performance in the coronary or peripheral vascular system.
 CAUTION: Federal (FDA) and state (CE) approvals are required for use in the coronary or peripheral vascular system.
 The curve recommendations are based on the catheter's performance in the coronary or peripheral vascular system.

Įvairių modifikacijų, su šoninėmis skylutėmis ar be jų. Užsakymo metu prekės kodo gale prieš nurodant ilgį reikia įrašyti SH.D raidė užsakyme reiškia - 90 cm ilgis, jei D raidės nenurodom, tuomet bus 100 cm. ilgis

Medtronic

Medtronic
 3576 Unocal Place
 Santa Rosa, CA 95403
 USA
 Tel: 707.525.0111

LifeLine Customer Support
 Tel: 877.526.7890
 Tel: 763.526.7890
Product Services
 Tel: 888.283.7868
 Fax: 800.838.3103

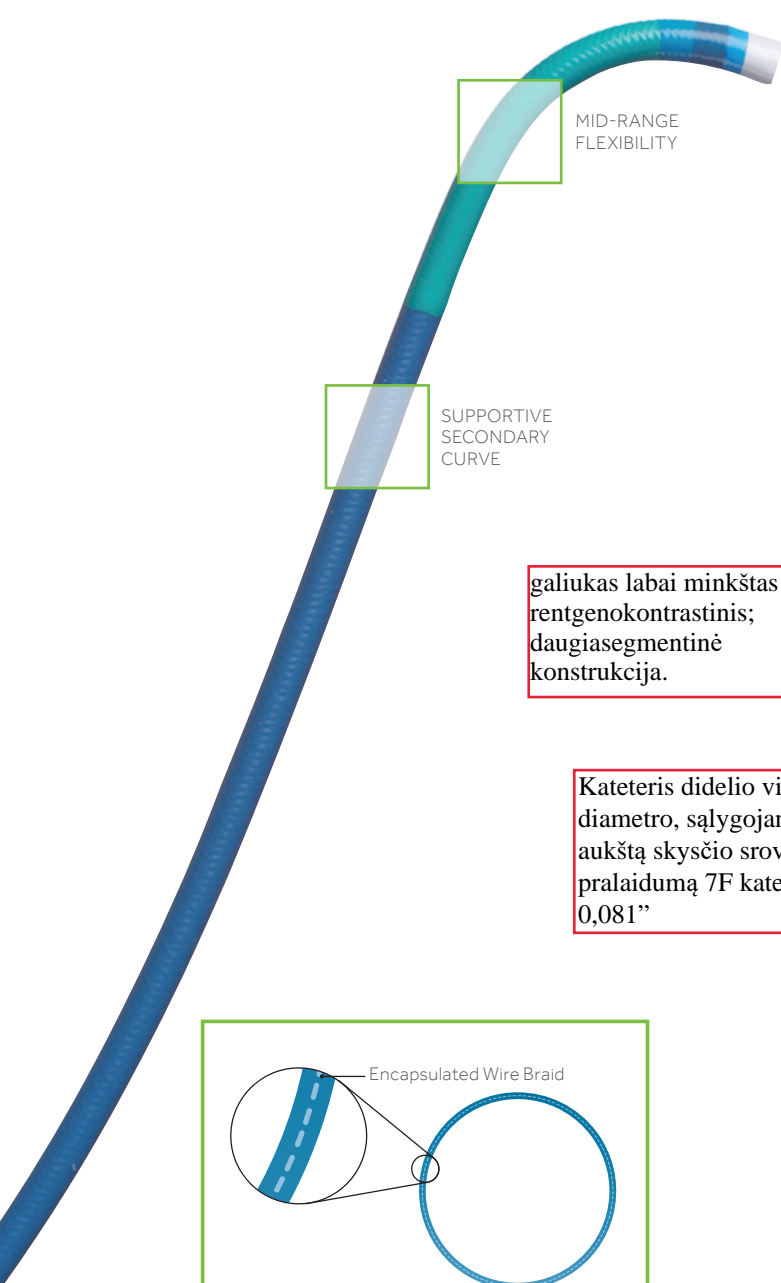
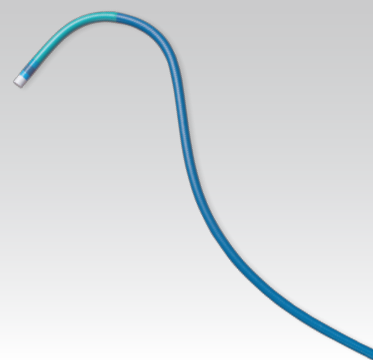
Europe
Medtronic Intl. Trading SARL
 Route du Molliou 31
 Case Postale
 CH-1131 Tolochenaz
 Switzerland
 Tel: 41.21.802.7000
 Fax: 41.21.802.7900

Canada
Medtronic of Canada Ltd.
 99 Hereford Street
 Brampton, Ontario L6Y 0R3
 Canada
 Tel: 905.460.3800
 Fax: 905.460.3998
 Toll-free: 800.268.5346

Asia Pacific
Medtronic Intl. Ltd.
 49 Changi South Avenue 2
 Nasaco Tech Centre
 Singapore 486056
 Singapore
 Tel: 65.6436.5000
 Fax: 65.6776.6335

Latin America
Medtronic
 9850 Doral Blvd., 4th Floor
 Miami, FL 33178
 USA
 Tel: 786.709.4200
 Fax: 786.709.4244

medtronic.com



BALANCED PERFORMANCE THAT'S AHEAD OF THE CURVE

The Launcher™ guide catheter offers you a blend of flexibility, support and visualisation — the capability you need to respond to your challenging cases.

Optimal Balance Between Flexibility and Support

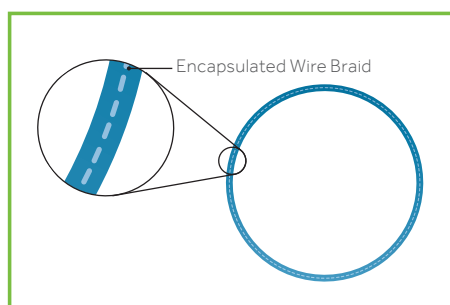
- Flexible distal segment enables you to engage the guide for backup support
- Full-Wall Technology construction provides kink resistance and stable torque control
- Supportive secondary curve for backup support when delivering larger profile devices

Enhanced Visualisation

- Large 7 F.I.D. (0.081 inches) allows for increased contrast flow for enhanced visualisation
- Vest-Tech Nylon outer jacket provides excellent hub to tip radiopacity
- Radiopaque marker band facilitates tip orientation for ostial engagement

Full Range of Traditional and Specialty Curves

- Extensive collection of traditional and specialty coronary curves available



MEDTRONIC FULL-WALL TECHNOLOGY:
Encapsulated flat-wire braid enables thinner, more robust walls without compromising support, retention, or torque response.

LAUNCHER™ 7 F GUIDE CATHETERS

LEFT CORONARY CURVES					Backup Support Left
Left Standard (JL)	Short Left (SL)	JCL	Amplatz Left	Short Amplatz Left	EBU
LA7JL30	LA7SL30	LA7JCL30	LA7AL75	LA7SAL75	LA7EBU30
LA7JL35	LA7SL35	LA7JCL35	LA7AL10	LA7SAL10	LA7EBU30D*
LA7JL35G^^	LA7SL40	LA7JCL40	LA7AL10D*	LA7SAL15	LA7EBU35
LA7JL35P^	LA7SL45	LA7JCL45	LA7AL15	LA7SAL20	LA7EBU35D*
LA7JL40	LA7SL50	LA7JCL50	LA7AL20	LA7SAL25	LA7EBU375
LA7JL40D*	LA7SL60		LA7AL20D*	LA7SAL30	LA7EBU40
LA7JL40G^^			LA7AL25	LA7SAL40	LA7EBU40D*
LA7JL40P^			LA7AL30		LA7EBU45
LA7JL45			LA7AL40		LA7EBU50
LA7JL50					
LA7JL60					
Left Standard (FL)					
LA6FL35					
LA6FL40					
LA6FL40G^^					
LA6FL40P^					
RIGHT CORONARY CURVES					
Right Standard	Short Right	JCR	Amplatz Right	Shepherd's Crook Right	Backup Support Right
LA7JR30	LA7SR30	LA7JCR35	LA7AR10	LA7SCR35	LA7RBU35
LA7JR35	LA7SR35	LA7JCR40	LA7AR10D*	LA7SCR40	LA7RBU40
LA7JR40	LA7SR40	LA7JCR45	LA7AR20	LA7SCR50	
LA7JR40D*	LA7SR45	LA7JCR50	LA7AR20D*		
LA7JR40P^	LA7SR50		LA7ALR12		ECR
LA7JR45	LA7SR60				LA7ECR35
LA7JR50					LA7ECR40
LA7JR60			Short Amplatz Right		LA7ECR45
			LA7SAR10		
FCR			LA7SAR20		
LA7FCR35					3-Dimensional
LA7FCR40					LA73DRC
					LA73DRIGHT
OTHER CURVES					
Multipurpose	MAC (Multi-Aortic)	Bypass	Champ	Peripheral	NOTO
LA7HSI	LA7MAC30	LA7IMA	LA7CHAMP05	LA7CHAMP15K+	LA7NOTO
LA7HSII	LA7MAC35	LA7IMAD*	LA7CHAMP05D*	LA7CHAMP20K+	
LA7RMHSII	LA7MAC375	LA7LCB	LA7CHAMP10	LA7CHAMP25K+	
LA7HSIII	LA7MAC40	LA7LCBD*	LA7CHAMP10D*	LA7IMAK+	EL GAMAL
LA7HSIV	LA7MAC45	LA7RCB	LA7CHAMP15	LA7JR40K+	LA7ELGAMAL
LA7MB1	LA7MAC50	LA7RCBD*	LA7CHAMP20	LA7MPHK+	
LA7MB2		LA7RCBII	LA7CHAMP25	LA7MP1K+	
LA7MP1			LA7CHAMP30	LA7MPHK+	
LA7MP1D*			LA7CHAMP35	LA7PK1W++	
LA7MPST			LA7CHAMP40	LA7RDCK+	
				LA7SCR40K+	
				LA7STRD*	

D* = 90 cm shaft length Shaft Diameter: 7 F K+ = 55 cm shaft length Inner Diameter: 0.081 in. W++ = 47 cm shaft length P^ = Posterior
 To order curves with sideholes, please add "SH" to end of model number G^^ = Anterior 5 packs available in select curves

Indications for Use
 Important Information
 CAUTION: Federal Food and Drug Administration (FDA) cleared for use as a guide catheter only. Do not use for any other purpose.

Visų kreivių kateteriai su šoninėmis skylutėmis (side-holes) papildomai perfuzijai procedūros metu ir be jų. Užsakymo metu prekės kodo gale prieš nurodant ilgį reikia įrašyti SH. D raidė užsakyme reiškia - 90 cm ilgis, jei D raidės nenurodom, tuomet bus 100 cm. ilgis

Do not be used in the coronary or peripheral vascular system.

The curve recommendations in this guide are not meant to replace patient-specific clinical judgement.

Medtronic

Medtronic
 3576 Unocal Place
 Santa Rosa, CA 95403
 USA
 Tel: 707.525.0111

LifeLine Customer Support
 Tel: 877.526.7890
 Tel: 763.526.7890
Product Services
 Tel: 888.283.7868
 Fax: 800.838.3103

Europe
Medtronic Intl. Trading SARL
 Route du Molliou 31
 Case Postale
 CH-1131 Tolochenaz
 Switzerland
 Tel: 41.21.802.7000
 Fax: 41.21.802.7900

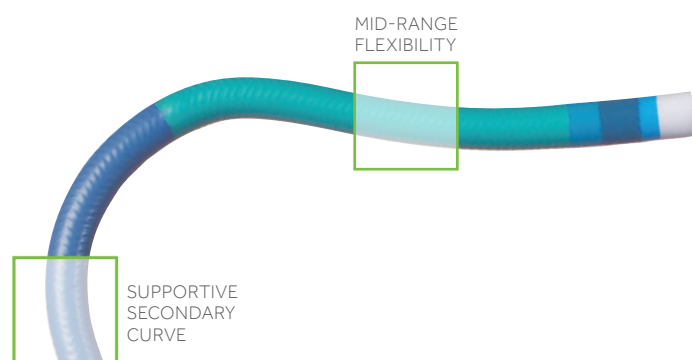
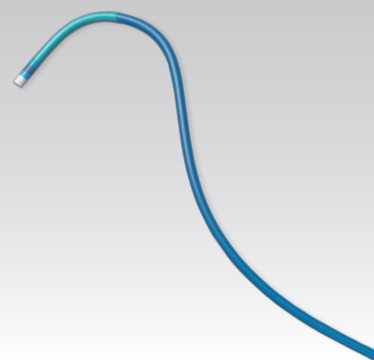
Canada
Medtronic of Canada Ltd.
 99 Hereford Street
 Brampton, Ontario L6Y 0R3
 Canada
 Tel: 905.460.3800
 Fax: 905.460.3998
 Toll-free: 800.268.5346

Asia Pacific
Medtronic Intl. Ltd.
 49 Changi South Avenue 2
 Nasaco Tech Centre
 Singapore 486056
 Singapore
 Tel: 65.6436.5000
 Fax: 65.6776.6335

Latin America
Medtronic
 9850 Doral Blvd., 4th Floor
 Miami, FL 33178
 USA
 Tel: 786.709.4200
 Fax: 786.709.4244

medtronic.com

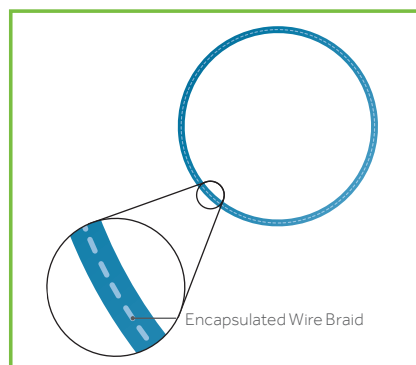
© 2017 Medtronic. All rights reserved. Medtronic, Medtronic logo and Further, Together are trademarks of Medtronic. All other brands are trademarks of a Medtronic company.
 For distribution only in markets where the Launcher™ guide catheter has been approved. Not for distribution in Japan or France. UC201701771E 8/17



galiukas labai minkštas ir rentgenokontrastinis; daugiasegmentinė konstrukcija.

Kateteris didelio vidinio diametro, sąlygojančio aukštą skysčio srovės pralaidumą: 8F kateteris 0,090"

MEDTRONIC FULL-WALL TECHNOLOGY:
Encapsulated flat-wire braid enables thinner, more robust walls without compromising support, retention, or torque response.



BALANCED PERFORMANCE THAT'S AHEAD OF THE CURVE

The Launcher™ guide catheter offers you a blend of flexibility, support and visualisation — the capability you need to respond to your challenging cases.

Optimal Balance Between Flexibility and Support

- Flexible distal segment enables you to engage the guide for backup support
- Full-Wall Technology construction provides kink resistance and stable torque control
- Supportive secondary curve for backup support when delivering larger profile devices

Enhanced Visualisation

- Large 8 F.I.D. (0.090 inches) allows for enhanced vessel visibility and device passage
- Vest-Tech Nylon outer jacket provides excellent hub to tip radiopacity
- Radiopaque marker band facilitates tip orientation for ostial engagement

Full Range of Traditional and Specialty Curves

- Extensive collection of traditional and specialty coronary curves available
- 90 cm length catheters available for your specialty cases

LAUNCHER™ 8 F GUIDE CATHETERS

LEFT CORONARY CURVES					Backup Support Left
Left Standard (JL)	Short Left (SL)	JCL	Amplatz Left	Short Amplatz Left	EBU
LA8JL30	LA8SL30	LA8JCL30	LA8AL75	LA8SAL75	LA8EBU30
LA8JL35	LA8SL35	LA8JCL35	LA8AL10	LA8SAL10	LA8EBU35
LA8JL40	LA8SL40	LA8JCL35D*	LA8AL10D*	LA8SAL15	LA8EBU35D*
LA8JL40D*	LA8SL45	LA8JCL40	LA8AL15	LA8SAL20	LA8EBU375
LA8JL45	LA8SL50	LA8JCL40D*	LA8AL20	LA8SAL25	LA8EBU40
LA8JL50	LA8SL60	LA8JCL45	LA8AL20D*	LA8SAL30	LA8EBU40D*
LA8JL60		LA8JCL45D*	LA8AL25	LA8SAL40	LA8EBU45
LA8JL70		LA8JCL50	LA8AL30		LA8EBU50
LA8JL80			LA8AL40		
			LA8AL40D*		
			LA8AL50		
RIGHT CORONARY CURVES					
Right Standard	Short Right	JCR	Amplatz Right	Shepherd's Crook Right	Backup Support Right
LA8JR30	LA8SR30	LA8JCR35	LA8AR10	LA8SCR35	LA8RBU35
LA8JR35	LA8SR35	LA8JCR40	LA8AR20	LA8SCR40	LA8RBU40
LA8JR35D	LA8SR40	LA8JCR45	LA8ALR12	LA8SCR50	LA8RBU40D
LA8JR40	LA8SR45	LA8JCR50			
LA8JR40D	LA8SR50				ECR
LA8JR45	LA8SR60				LA8ECR35
LA8JR50					LA8ECR40
LA8JR60			Short Amplatz Right		LA8ECR45
			LA8SAR10		
			LA8SAR20		
					3-Dimensional
					LA83DRC
OTHER CURVES					
Multipurpose	MAC (Multi-Aortic)	Bypass	Champ	Peripheral	NOTO
LA8HSI	LA8MAC30	LA8IMA	LA8CHAMP05	LA8CARL3D*	LA8NOTO
LA8HSII	LA8MAC35	LA8IMAD*	LA8CHAMP10	LA8CARLD*	
LA8RMSHII	LA8MAC375	LA8LCB	LA8CHAMP15	LA8CHAMP15K+	
LA8HSIII	LA8MAC40	LA8LCBD*	LA8CHAMP20	LA8CHAMP20K+	
LA8MB1	LA8MAC45	LA8RCB	LA8CHAMP25	LA8CHAMP25K+	
LA8MB1D*	LA8MAC50	LA8RCBD*	LA8CHAMP30	LA8IMAK+	
LA8MB2		LA8RCBII	LA8CHAMP35	LA8JR40K+	
LA8MB2D*			LA8CHAMP40	LA8MP1K+	EL GAMAL
LA8MP1				LA8MPHK+	LA8ELGAMAL
LA8MPST				LA8PK1W++	LA8ELGAMAL2
				LA8RDCK+	LA8ELGAMAL3
				LA8SCR40K+	
				LA8STRD*	
				LA8STRK+	
				LA8SW1	
				LA8SW1D*	

D* = 90 cm shaft length Shaft Diameter: 8 F K+ = 55 cm shaft length Inner Diameter: 0.090 in. W++=47 cm shaft length
 To order curves with sideholes, please add "SH" to end of model number 5 packs available in select curves

Indications for Use: The Medtronic Guiding Catheter is intended for use in the coronary artery system.
Important Information: Refer to Instructions for Use.
CAUTION: Federal (USA) law restricts this device to use by or on the order of a physician.
 The curve recommendations in this guide are not intended to be used as a substitute for clinical judgment.

Visų kreivių kateteriai su šoninėmis skylutėmis (side-holes) papildomai perfuzijai procedūros metu ir be jų. Užsakymo metu prekės kodo gale prieš nurodant ilgį reikia įrašyti SH. D raidė užsakyme reiškia - 90 cm ilgis, jei D raidės nenurodom, tuomet bus 100 cm. ilgis

Medtronic

Medtronic
 3576 Unocal Place
 Santa Rosa, CA 95403
 USA
 Tel: 707.525.0111

LifeLine Customer Support
 Tel: 877.526.7890
 Tel: 763.526.7890
Product Services
 Tel: 888.283.7868
 Fax: 800.838.3103

Europe
Medtronic Intl. Trading SARL
 Route du Molliau 31
 Case Postale
 CH-1131 Tolochenaz
 Switzerland
 Tel: 41.21.802.7000
 Fax: 41.21.802.7900

Canada
Medtronic of Canada Ltd.
 99 Hereford Street
 Brampton, Ontario L6Y 0R3
 Canada
 Tel: 905.460.3800
 Fax: 905.460.3998
 Toll-free: 800.268.5346

Asia Pacific
Medtronic Intl. Ltd.
 49 Changi South Avenue 2
 Nasaco Tech Centre
 Singapore 486056
 Singapore
 Tel: 65.6436.5000
 Fax: 65.6776.6335

Latin America
Medtronic
 9850 Doral Blvd., 4th Floor
 Miami, FL 33178
 USA
 Tel: 786.709.4200
 Fax: 786.709.4244

medtronic.com

© 2017 Medtronic. All rights reserved. Medtronic, Medtronic logo and Further, Together are trademarks of Medtronic. All other brands are trademarks of a Medtronic company.
 For distribution only in markets where the Launcher™ guide catheter has been approved. Not for distribution in Japan or France. UC201701772IE 8/17